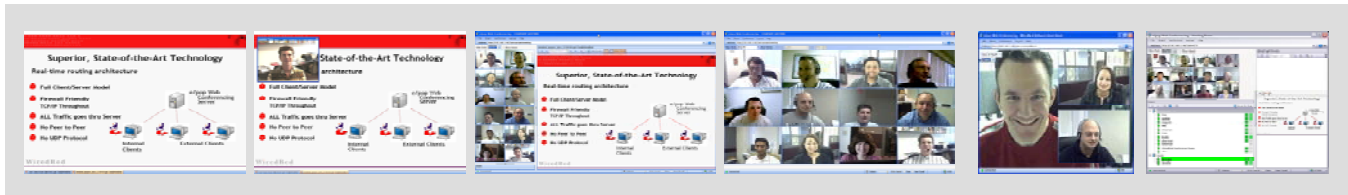




REAL-TIME COMMUNICATIONS DATA SHEET



e/pop Web Conferencing v4.6

e/pop Web Conferencing software is a state-of-the-art rich media conferencing solution. It provides a full suite of real-time collaboration features, plus multiparty, fully interactive VoIP and desktop video conferencing.

e/pop is used in sales, customer service, training and intra-company meetings to easily communicate complex topics and eliminate unnecessary travel – whether down the hall or around the world.

Overview

Proven Technology - e/pop Web Conferencing is powered by WiredRed's Real-Time Routing Platform™. This proven technology has been deployed since 1998 in conferencing and real-time messaging applications in thousands of customer installations worldwide. Installations include government, military, financial services, legal and a wide variety of secure, demanding environments.

Full Featured – e/pop includes all the customary real-time collaboration features, on-the-fly PowerPoint sharing, plus user and presentation controls needed for everything from fast, easy meetings, to formal presentations with multiple speakers.

Superior VoIP & Video Conferencing – e/pop leadership shines with its high-quality, multipoint VoIP and desktop video conferencing features. Within IT-allowed limits, everyone can enjoy full-screen, full-motion video. You can even boo or cheer all at the same time.

Easy to Install/Activate, Maintain and Secure – e/pop is IT friendly, providing options for on-premise installation via a single executable; or 'one call to activate' hosted service. e/pop supports all the leading standards for browser security, firewall and proxy traversal, and allows customers to use their own network certificates and/or public key infrastructure (PKI).



Feb. 2007

Training heaven



Oct. 2006

Why travel when you can attend a web conference?



June 2006

Videoconferencing via the Web aids Hawaii disaster response



Sept. 2005

**Manageability: five stars
Security: five stars**

Easy Features For Impromptu Meetings & New Users

Dynamic PowerPoint Sharing

No need to pre-process your PowerPoint presentations, just select Share PowerPoint. Attendees see beautiful presentations (vector and image graphics rendered just like PowerPoint itself), not screen grabs like many competitive products.

Desktop Sharing

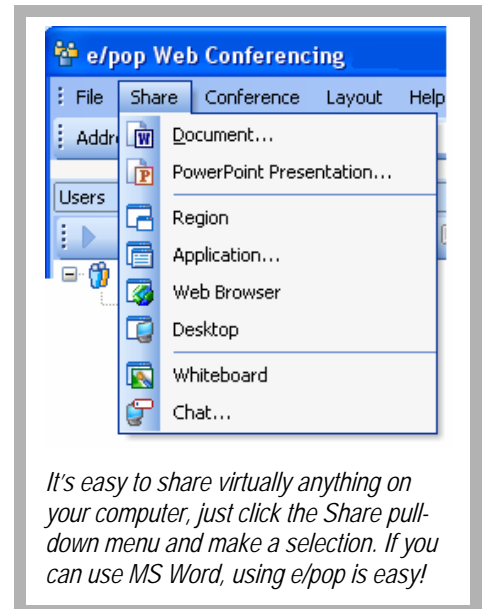
No time to learn all the collaboration features? No problem, just share your desktop and get moving.

Play-All / Unmute-All

Even multiparty VoIP and video conferencing is easy. e/pop is the first with play-all and unmute-all features. Using VoIP and video really adds more pizzazz to your meetings, makes them more memorable, and provides even more ways to cut travel.

QuickStart & Outlook Integration

No need to visit a web site and login. The e/pop Quick Start client gives you a tray icon, desktop shortcut, Outlook and Office tool-buttons. Start your conference with one click.



Comprehensive Features For Sales, Training & Events

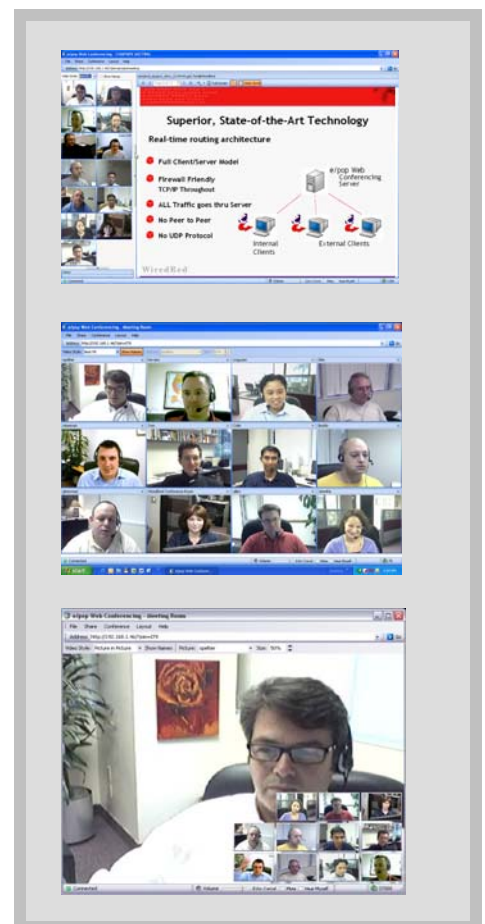
Visibly Superior, Multipoint Video Conferencing

e/pop is not limited to one presenter, or four presenters, anyone and everyone can use video (within limits set by conference host and IT staff)! The meeting host can change video devices, size, quality and frame rate (fps) in real-time, no need to re-start the conference as required by other products. While advanced users can make individual video settings, it's easy to open the Conference menu, and 'Set All Video To' and just pick low, medium or high. Picture in Picture (PIP), best fit and floating window layouts let conference hosts pick the most productive format for their meeting.

High Quality, Multipoint VoIP Conferencing

Multipoint VoIP conferencing might be easier than you think. All you need is a PC headset (or separate microphone and speakers). e/pop includes an audio tuning wizard that will have you up and running in no time. If you're already paying for your Internet connection, take advantage of this feature to reduce or completely eliminate your recurring teleconferencing expenses.

e/pop highly scalable multipoint voice is capable of handling hundreds of simultaneous talkers and listeners. The state of the art voice codecs provide superb voice quality exceeding industry standards. Components include an audio tuning wizard, a suite of VoIP codecs, adaptive noise cancellation (ANC), acoustic echo cancellation (AEC), automatic gain control (AGC), voice activity detection (VAD), optimizations that properly handle



discontinuous transmission (DTX), sample rate conversion (handling multiple participants at differing sample rates), jitter filter management, and mixing and bridging for multipoint VoIP conferencing. The codec suite includes G.726, G.711 and a library of industry standard and proprietary codecs. For additional information, please contact WiredRed.

Layout Options

Default, full screen, webinar (video and PPT only), video-only, completely undockable and more. Change on the fly, 'push' the layout to attendees, or select 'follow my layout.'

User Controls

Full control for hosts, presenters and participants. No problems changing roles/rights in real-time.

Document Sharing

Share virtually any document on a Windows PC, even large documents with graphics and tables. The virtual document is sent only once, making very efficient use of bandwidth.

Application Sharing

Easily share applications in real-time, you can even share more than one and take advantage of e/pop remote control features.

Browser Sharing

Share your browser with one or hundreds of participants. It sure beats playing 'link in a hay stack' over the phone, then asking your participants what they see. Instead, just share your browser.

Region Sharing

A nice feature when presenting complex displays and you want to limit participants' view to relevant data. It's also very handy if you have a messy desktop.

White Board

When words run out, the white board is ready for chalk-talks.

Chat & Ink Chat

e/pop includes a text chat feature, with options for chat between all users, hosts/presenters and specific users. e/pop also supports Ink Chat for Tablet PC and stylus applications.

Annotation

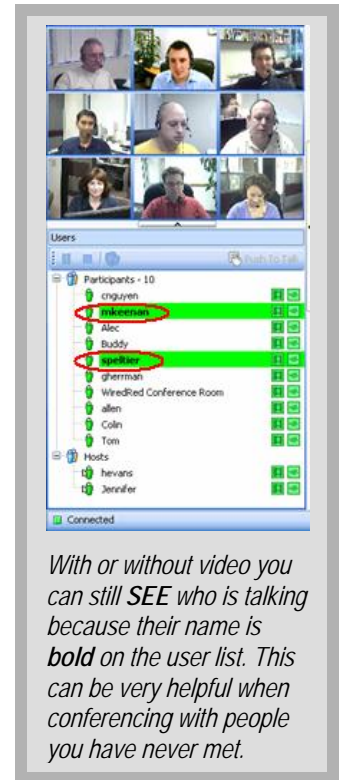
A complete annotation tool bar is available for collaborating on documents and PowerPoint presentations.

Remote Control

e/pop Remote Control works with all live sharing features above (desktop, region, application and browser sharing). Security prompts, a display showing who has control, and quick bail-out options (a STOP share button and a keyboard short-cut) help comfort-level in customer service scenarios.

Record & Playback

The meeting host can save conferencing sessions with a click of the mouse. Sessions including audio (VoIP), multipoint video, and all web conferencing features – PowerPoint, document, browser, application, region and complete desktop sharing – can be saved in multiple industry standard formats including Macromedia Flash, Windows AVI and WMV. Bench testers: Many competitive products and online services use proprietary recording formats that are incompatible with e-learning and multimedia editing suites.



*With or without video you can still **SEE** who is talking because their name is **bold** on the user list. This can be very helpful when conferencing with people you have never met.*

Easy to Install, Maintain and Secure

Easy to Install

Like PC Magazine says, "You'll be up and running in 5 minutes and five mouse clicks". The entire e/pop server executable is provided in one download, including the installation wizard.

Easy Hosted Service Activation

e/pop is available as software and hosted service. It only takes one phone call to activate your account.

Easy to Maintain

e/pop includes all the components necessary for web, VoIP and multipoint video conferencing. There are no prerequisites for databases, web servers, JVM and so on. No 3rd party rev-level mismatches and maintenance complexities to worry about.

Secure

e/pop web conferencing is one of the most secure web conferencing solutions available today. It is available as installed software, so you have control over physical security, IP traffic routing, and access to your server event logs. At the click of a mouse, you can set your conference server to allow HTTPS, to always use TLS/SSL3 (Secure Socket Layer 3) or let your conference hosts decide whether they want to use secure connections. For sensitive applications, you can also use your own certificates and/or public key infrastructure (PKI). Detailed settings include SHA or MD5 hash for signing; RC4, IDEA, DES, 3DES, AES, RSA for encryption, with key lengths from 40 to 4096. Note that all conference features result in one data stream over one secured IP connection. Bench testers: Warning! Competitive products often use SSL for PowerPoint sharing, but separate connections and different, unsecure protocols for desktop sharing, VoIP and video.

Better Connections – Firewall & NAT Traversal

WiredRed real-time communications products have been providing superior NAT and firewall traversal for years. e/pop Web Conferencing can connect hundreds of users over the Internet, each behind their own firewall – all without the installation of edge-routers, video MUXs, point-to-point lines or pre-installed "fat client" software.

More Controls – Features, Users, Conference Rooms & Network QoS

e/pop products have a long history of IT-friendly controls that give system administrators recommended defaults, and detailed controls for customer-specific policies and network environments. Controls govern user accounts, conference rooms, features (e.g., disable remote control), and QoS bandwidth limits. Settings are easy to make, and WiredRed staff are always available to help.

Usage Reporting – Date/Time, User & Feature Reporting

To complement the controls above, e/pop includes a complete Usage Reporting feature covering all conference server activity by date/time, user and features used. The administrator's console has simple default reports, with options to drill down on custom date/time, user and feature selects. In addition, administrators can export data in standard formats for data mining, bill-back reports and other custom purposes.

Customization – Your Own Conference URL & Welcome Page

One of the biggest advantages of e/pop is customization. You can edit your welcome screen, logos, color schemes and more. You can even register your e/pop server with your DNS and create your own conferencing URL (e.g., meetnow.mycompany.com).



"You may be concerned about installation and configuration for a product like this, but you'll be done in 5 minutes with five mouse clicks."

Performance – SMP Enabled

e/pop is fast! It is multithreaded end-to-end. It is symmetric multiprocessor enabled. Separate processes manage each buffer and various features used, resulting in the most fluid rich media conferencing experience. Bench testers: When using dual or quad processors, just check task manager, it will show each CPU's utilization.

Accessibility & Availability

Another advantage of on-premise software is guaranteed accessibility to your own resources. Let's face it, even the best managed online services have peak periods and accessibility delays. Installation on your own server avoids these potential problems. Customers concerned with High Availability should contact WiredRed regarding installation on Stratus and other fail-over servers.

Reliability

e/pop runs on industry standard servers and audio/visual components for best cost-effectiveness and reliability. All the server software components are e/pop through-and-through. There are no 3rd party databases, web servers, virtual machines and other complexities to fail.

Scalability

e/pop is compiled code, it is SMP enabled (see above) and scales across CPUs. Plus, it supports multi-server installations. The recommended maximum number of concurrent connections per e/pop conferencing server is 500. Additional servers can be added as needed for large-scale data center applications. Bench testers: Relying on JVM and other interpreted environments at the server can often mean limited scalability, even as low as 20 concurrent users.

Minimum System Requirements

Server Operating Systems

- Windows 2000 Server, with SP2, Windows 2003 Server
- Pentium 3
- 1.2 GHz
- 256 MB RAM for this application
- 200 MB disk space for this application
- 10 Mbit network card
- A static TCP/IP address (physical or mapped), or host/domain name. The IP address or host name must be routable for all intended participants
- Broadband Internet access.

Note: asymmetric service such as DSL with limited uplink bandwidth is not acceptable for server installation. Please see Additional Reference Material below for server bandwidth requirements, consider e/pop hosted services, or contact WiredRed for assistance.

Client Operating Systems

- Windows Vista, Windows XP, ME, Windows 2003, Windows 2000 w/SP2
- Pentium 4
- 1.4 GHz
- 256MB RAM
- 1-15 MB disk space for this application
- 10 Mbit Network card
- Valid TCP/IP address (public or private)
- Broadband Internet access
- Internet Explorer, v5.0 or later recommended, Firefox, Netscape
- Microsoft PowerPoint 97 and above for PowerPoint presenter (optional)
- Windows compatible microphone, speakers or headset (optional, headset recommended)
- Windows compatible video device, with DirectX v9.0 or later driver (optional)

Note: the above covers popular USB 2.0 and Firewire webcams, plus PCI bus video capture cards. The latter can be used with virtually any video input device (DVD player, video camera, etc.).

Additional Reference Material

User Guides

e/pop Web Conferencing Administrator & Users Guide (PDF)

<http://www.wiredred.com/downloads/ewc.pdf>

1-Page Pocket Reference Guide (PDF)

<http://www.wiredred.com/downloads/epop-pocket-browser.pdf> (for browser users)

<http://www.wiredred.com/downloads/epop-pocket-reference.pdf> (for Quick Start client users)

Recommendations & Additional Material

Server Recommendations for 50 Concurrent Users or More

http://www.wiredred.com/epop_downloads_webconf_req.html

Recommendations for Video Conferencing Equipment

<http://www.wiredred.com/video-conferencing-equipment/>

Typical Configurations

http://www.wiredred.com/web-conferencing-quickstart/epop_typical_configs.html

Web Conferencing FAQ

http://www.wiredred.com/epop_wc_faq.html

e/pop XML Programmers Reference Guide

Included in product executable set, contact WiredRed for details.

© 2007 WiredRed Software.
All rights reserved.

WiredRed and e/pop are registered trademarks, and WiredRed Real-Time Routing Platform is a trademark of WiredRed Software. All other trademarks are property of their respective owners.